



ANNUAL REPORT

2025





A WORD FROM OUR EXECUTIVE DIRECTOR

Dear LYTE Community,

This past year at LYTE, we leaned even more fully into a simple but powerful belief: *preparing students for life begins with what happens today*. As the needs of our students continue to evolve, so too has our work, but through that growth we have stayed true to our core conviction that education remains the foundation for opportunity, mobility, and long-term success. *Adaptation has not changed who we are. It has only strengthened how we serve.*

We envision a future where every young person, regardless of zip code, income, or background, has access to the education, career support, and community they need to become thriving, resilient, and contributing citizens who lead fulfilling lives. That vision continues to guide how we adapt, refine, and deepen our impact.

Our LYTE alumni have played an essential role in this evolution. As our earliest cohorts of students have progressed into college and the workforce, they stayed connected to LYTE, sharing insights, challenges, and successes that help us better understand what students need at each stage. Because of them, we continue to adapt by *strengthening a model that not only opens doors, but stays with students from middle school through college and into their careers.*

This commitment begins early. In middle school, we continue to focus on academic growth, high school readiness, and building the habits that set students up for long-term success. Students receive guidance on course selection, exposure to rigorous academic pathways, and support in developing the skills and confidence needed for the transition to high school. *At the same time, we are adapting to introduce earlier career awareness.* In 2025, we launched a brand new event—LYTE Middle School Career Day—where young students engage in hands-on career experiences with professionals, expanding what they believe is possible and beginning to connect education to future career pathways.

That foundation carries into high school, where our programming continues to emphasize both academic excellence and future planning. Through consistent advising, students are guided toward rigorous coursework, supported through the college application process, and equipped with the tools to navigate financial aid and postsecondary decisions. Alongside this, our Career Pipelines immerse students in fields such as healthcare, law, business, education, and government. *Students do not just learn about careers; they experience them through internships, mentorship, and real-world projects.* With the support of a strong network of public and private partners, students gain practical skills, professional exposure, and a clearer sense of direction.

As students earn stipends through internships, they also start building financial foundations. By helping our students open 529 college savings accounts and encouraging them to contribute a portion of their earnings, they take early steps toward long-term economic stability. This is a reflection of how we continue to adapt, connecting education, career exposure, and financial readiness in ways that prepare students for what comes next.

Our support continues through college, where students navigate new challenges that require persistence and guidance. From course selection and choosing a major to managing financial aid and preparing for careers, we remain a consistent source of support. Now, as our fifth cohort of students prepares to graduate college and enter the workforce, we are adapting once again to meet the moment. *In response to an increasingly complex job market, we have expanded our focus on career readiness* through job fairs, skill-building, and earlier exposure to workforce pathways so that students are prepared well before graduation.

“ **WHAT SETS LYTE APART IS NOT JUST ACCESS, BUT CONTINUITY—**
GUIDING STUDENTS FROM THEIR EARLIEST STEPS THROUGH THE START OF THEIR CAREERS. ”

We are also seeing the impact of this work come full circle. *LYTE alumni are returning to serve their Delaware communities*, including through AmeriCorps with LYTE. LYTE alumni leaders like Whitney Grinnage-Cassidy and Wes Colley are now supporting LYTE students every day as AmeriCorps members, bringing full-circle impact to our program. Their journeys reflect the power of sustained support and the role that adaptation has played in strengthening each stage of the LYTE experience.

From middle school through college and into careers, this is how lives are changed. LYTE students gain not only access, but the preparation, direction, and support needed to lead stable and fulfilling lives and to give back in meaningful ways.

To all who support our mission, thank you. Your belief in our students creates opportunity and ensures they are ready to seize it.

With gratitude,



ANKUR ARYA

FOUNDER & EXECUTIVE DIRECTOR

BOARD OF DIRECTORS

LYTE is incredibly grateful for the continued commitment and leadership of our Board of Directors over the past year. *We are thrilled to welcome Clint Walker as our new Board President* and are excited for the direction ahead under his leadership. Clint brings a depth of experience and perspective that will help guide LYTE into its next phase of impact.



CLINT WALKER
INCOMING BOARD PRESIDENT



ZACH BEATTIE
OUTGOING BOARD PRESIDENT

We also extend our sincere thanks to our outgoing Board President, Zach Beattie. Zach's leadership and vision have played a pivotal role in shaping LYTE's trajectory, strengthening our foundation, and deepening our impact on students. His contributions leave a lasting legacy that will continue to influence our work moving forward.

OUR MISSION

MISSION

LYTE prepares economically disadvantaged youth for success from classroom to career through rigorous academic instruction, personal mentoring, and career development.

Our nine-year program supports students from middle school through college, helping them overcome barriers, access higher education, and enter the workforce prepared to lead fulfilling, productive lives.

VISION

We envision a future where every young person—regardless of zip code, income, or background—has access to the education, career support, and the community they need to become thriving, resilient, and contributing citizens who lead fulfilling lives.

VALUES

BREAKING DOWN BARRIERS

We confront the systemic and structural obstacles that stand in the way of our students' success—whether academic, financial, or social—so every student has a fair chance to reach their full potential.



LONG-TERM COMMITMENT

We stand by our students from middle school through college, working alongside them for nearly a decade as they grow into confident scholars, leaders, and professionals.



REAL-WORLD READINESS

We go beyond the classroom to prepare students for life after school—through internships, leadership development, career training, and financial empowerment.



RESULTS THAT MATTER

We don't just track success—we build it. From college acceptances to career placements, we are driven by impact and sustained by data, outcomes, and student stories.



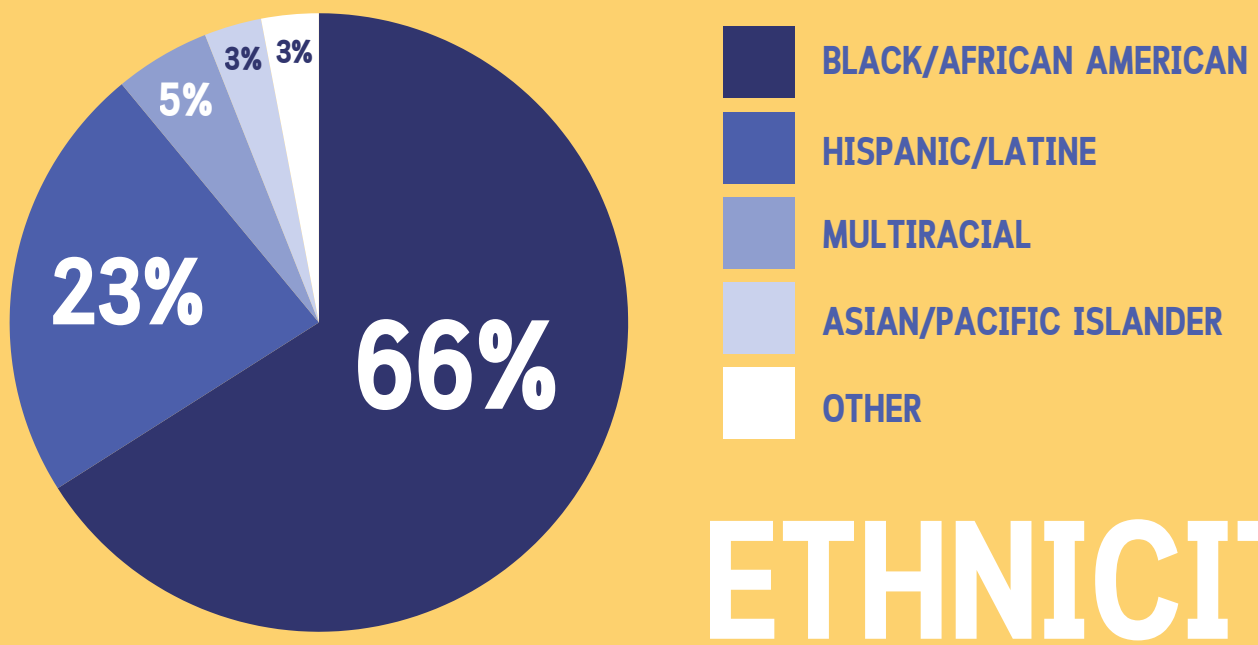


FLII GRADUATION, 2025



CAREER EXPO, 2025

DEMOGRAPHICS



ETHNICITY

800+ ACTIVE SCHOLARS

INCOME



JOURNEY

OF A LYTE SCHOLAR

1

MIDDLE SCHOOL CHANGING ACADEMIC TRAJECTORY

After engaging with LYTE, middle school students are equipped to gain admission to Delaware's most **competitive high schools**.

- Advanced academic enrichment
- Test preparation & placement exams
- High school placement support
- Financial aid guidance
- Career exploration

Students in 9th-12th grade are paired with a dedicated LYTE advisor who guides them as they navigate high school and **prepare for postsecondary and career success**.

- High school transition support
- Career development & portfolios
- College and career planning
- Academic rigor
- Summer enrichment & internships
- College application support

HIGH SCHOOL BRIDGE TO SUCCESS

2

POSTSECONDARY NEW HORIZONS

Students receive ongoing support throughout college, helping students overcome challenges, stay on track, and **successfully earn their degree and enter the workforce**.

- College transition support
- Career & professional development
- Delaware-based internships
- Networks & connections

3

END GOALS

1 MAXIMIZE OPPORTUNITIES FROM CLASSROOM TO CAREER

2 BRING STUDENTS BACK TO DELAWARE POST-GRAD

3 CREATE DELAWARE'S NEXT GENERATION OF LEADERS

SCHOOL PARTNERS

MIDDLE & HIGH SCHOOLS



Alexis I. du Pont High School
 Alfred G. Waters Middle School
 Appoquinimink High School
 Archmere Academy
 Brandywine High School
 Brandywine School District
 Brandywine Springs School
 Cab Calloway School of the Arts
 Caesar Rodney High School
 Cantwell Bridge Middle School
 Charter School of New Castle
 Charter School of Wilmington
 Christiana High School
 Christina School District
 Christ the Teacher
 Colonial School District
 Concord High School
 Conrad Schools of Science

Delaware Military Academy
 Delcastle Technical High School
 Dover High School
 Dover Middle School
 Early College High School at DSU
 Eastside Charter School
 Everett Meredith Middle School
 First State Military Academy
 Freire Charter School Wilmington
 George Read Middle School
 Glasgow High School
 Great Oaks Charter High School
 Gunning Bedford Middle School
 Holy Angels School
 Howard High School of Technology
 John Dickinson High School
 Kuumba Academy Charter School
 Las Americas Aspira Academy

Louis L. Redding Middle School
 McCollough Middle School
 Milford Central Academy
 MOT Charter School
 Mount Pleasant High School
 Nativity Preparatory School
 NCC Vo-Tech School District
 Newark Charter School
 Newark High School
 Odessa High School
 Odyssey Charter School
 P.S. Dupont Middle School
 Padua Academy
 Paul M. Hodgson Vo-Tech School
 Polytech High School
 Red Clay Consolidated School District
 Saint Mark's High School
 Salesianum School

Serviam Girls Academy
 Skyline Middle School
 Springer Middle School
 St. Andrews School
 St. Elizabeth School
 St. Georges Technical High School
 Sussex Academy of Arts and Sciences
 Talley Middle School
 The John Dickinson School
 The Tatnall School
 Thomas Edison Charter School
 Thomas McKean High School
 Tower Hill School
 Ursuline Academy
 William Penn High School
 Wilmington Christian School
 Wilmington Friends School



COLLEGES & UNIVERSITIES

Albright College
 Amherst College
 Boston University
 Bucknell University
 Cornell University
 Delaware Technical Community College
 Dickinson College
 Gettysburg College
 Haverford College
 Juniata College
 Lehigh University
 Muhlenberg College
 Neumann University
 Swarthmore College
 University of Delaware
 University of Notre Dame
 Washington University in St. Louis

CAREER PIPELINE

DEVELOP PROFESSIONAL SKILLS & BUILD COLLEGE SAVINGS

WORKFORCE DEVELOPMENT

Career Pipeline launches our scholars into high-growth industries and positions them to become **Delaware's highly skilled workforce of tomorrow**

CAREER EXPLORATION

DEVELOP PROFESSIONAL ACUMEN

SHADOWING & NETWORKING

EARN CERTIFICATIONS

PAID INTERNSHIPS

PATHWAYS TO EMPLOYMENT

BUILD COLLEGE SAVINGS

BUILD A CAREER PORTFOLIO



GOVERNMENT
ADMINISTRATION



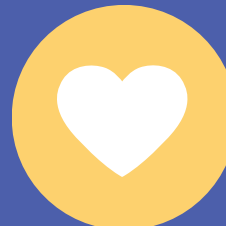
LAW



BUSINESS



EDUCATION



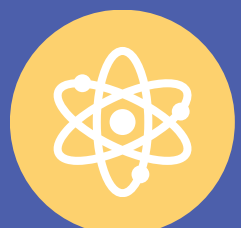
HEALTH
SCIENCES



MENTAL HEALTH
& SOCIAL SERVICES



IT & COMPUTER
SCIENCE



SCIENCE &
ENGINEERING

DID YOU KNOW?

Low- to moderate-income students who save at least \$500 are 5x more likely to graduate college.

As a part of our Career Pipeline, LYTE helps scholars open DE 529 college savings accounts.

PIPELINE PARTNERS

ChristianaCare
 DE Black Chambers of Commerce
 Delaware Art Alliance
 State of Delaware Department of Finance
 Family Life Project
 Wilmington Youth Rowing Association (WYRA)
 Delaware Museum of Nature and Science
 American Civil Liberties Union (ACLU)
 Child Inc.
 Community Legal Aid Society, Inc / Combined Campaign for Justice
 Health Equity Institute of Delaware (HEIDE)
 Children and Families First
 Rodel Foundation
 The Innocence Project
 Nonny's Shea Butter LLC
 Alternatives Beauty School
 Geo-Tech Associates
 Young Conaway Stargatt & Taylor
 Delaware Law-Related Education Council (DEL-REC)
 Freire Charter School of Wilmington
 AmeriCorps Delaware



DELAWARE HEALTH AND SOCIAL SERVICES
 Division of Public Health



**Delaware Museum
 of Nature & Science**



ChristianaCare 10
 Gene Editing Institute
CELEBRATING 10 YEARS



**YOUNG CONAWAY
 STARGATT & TAYLOR, LLP**
Attorneys at Law



Girls Who Code
 Planned Parenthood of Delaware
 UD Lerner School of Business
 Compass Real Estate
 WSFS Bank
 NerditNow
 Apollo: Youth in Medicine
 UD Epidemiology
 Beebe Healthcare
 Bayhealth
 Westside Family Health
 ChristianaCare Gene Editing Institute
 Transportation You
 Senate Page Program
 UD CHARM (Center for Hybrid, Active, and Responsive Materials)
 Capital One Coders
 Healthy Communities Delaware
 Delaware Health and Social Services (DHSS)
 State of Delaware, Administrative Office of the Courts
 UD Physics IceCube Masterclass
 Widener Law School
 DE Department of State

Special thanks to the **DE Department of Labor**
 and **DE Americorps** for partnering with LYTE!



CLASS OF 2025



This past summer, LYTE celebrated our 8th graduating senior class. This year marked the second consecutive year that the FAFSA application for financial aid opened later than usual—this time about one month behind schedule—and introduced a redesigned platform with updated language and processes. Many of our students faced challenges navigating these changes, including the new way of adding a parent, now referred to as a “contributor.”

To support our students and families through these updates, LYTE provided 10 in-person financial aid workshops, including one in Dover, as well as individualized virtual financial aid support upon request. These efforts ensured that every student had access to the guidance they needed to successfully complete their applications.

Despite these barriers, our students demonstrated resilience and determination throughout the college application process. With LYTE’s support, once again 100% of our seniors were accepted into college. LYTE seniors worked extremely hard, submitting an average of 11 college applications per student, and 37.10% applied through Early Decision, reflecting their commitment and preparation for the next chapter.



SCHOLARSHIPS

- 7** full rides to UD
- 2** GSB full-ride scholarships to UD
- 6** UD honors college acceptances
- 1** \$68k Annika Scholarship + \$2.5k stipend
- 1** full ride to Washington and Lee + \$10k stipend

COLLEGE LIST

Boston College
 Boston University
 Carleton College
 Cheyney University
 Coastal Carolina University
 Coppin State University
 Delaware State University
 Delaware Technical Community College
 Florida International University
 Hampton University
 Haverford College
 Immaculata University
 Lehigh University
 Morgan State University
 Muhlenberg College
 Pace University
 Shaw University
 Syracuse University
 University of Delaware
 University of Delaware Honors College
 University of Maryland
 University of Pennsylvania
 Washington and Lee University
 Washington College
 Washington University in St. Louis
 York College

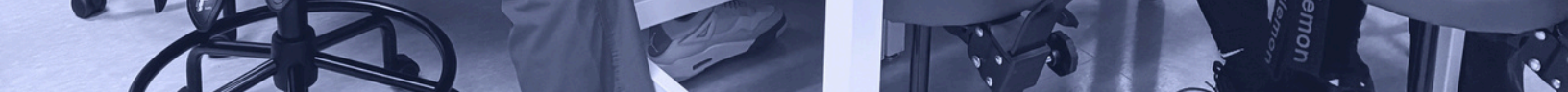


LYTE GRADUATION CEREMONY, 2025





CHRISTIANACARE GENE EDITING TRIP, 2025



GEORGETOWN LAW SCHOOL TRIP, 2025



800+

active LYTE Scholars
(grades eight through college)

98%

of students have taken
an advanced course
(honors, AP, above grade
level, phase 4 or 5, or IB class)

100%

of 12th grade students
were accepted to college

\$7.6M

amount of grants,
scholarships, and financial
aid secured by LYTE
Scholars



2025 IN NUMBERS

221

internships and
career-based programs

18,912

total hours
students worked

\$273K

total internship
stipends earned

TESTIMONIALS

ANDREW S.

LAS AMERICAS ASPIRA ACADEMY, 2026
HAVERFORD COLLEGE, 2030

The number of opportunities I've been exposed to thanks to LYTE is really amazing. LYTE helped me get an internship at the Delaware Department of Natural Resources as a policy intern, made possible by the LYTE staff's work and partnership with the Future Leaders Internship Initiative. As a policy intern, I learned about how the policies passed by legislation affected the parks and the nonprofits that partner with the parks to maintain them. I was able to do some grant research for those nonprofits and actually help clean the trails. Thanks to LYTE, I've completed 231 hours of coordinated internship with service in a Delaware Organization, all before graduating high school. Not to mention, LYTE has made the college onboarding process super easy by hosting essay and application workshops. With LYTE's support, I am a Questbridge Finalist and have been accepted to Haverford College, Denison College, UD, and Colby College. I will be attending Haverford College like my mentor, Mr. Arya!



LADUN A.

WILLIAM PENN HIGH SCHOOL, 2025
WASHINGTON AND LEE UNIVERSITY, 2029

LYTE has been invaluable in providing both hands-on experience and guidance throughout the college application process. Through LYTE, I had the opportunity to participate in FLii and intern at the Kent County Court of Common Pleas, engage in an early outreach law program, and gain crucial interview experience. When it came to applying to college, words can hardly capture how much LYTE's support meant to me. Every Tuesday and Thursday during the fall semester, as well as every day during breaks, LYTE's offices were open, with staff available to assist in refining our college applications and essays. I fully utilized this incredible resource, applying to 21 schools and writing over 30 essays with their guidance. Thanks to LYTE, I earned the Johnson Scholarship—a full ride, along with a \$10,000 award for a summer experience—at Washington and Lee University, where I'll be attending this fall. Without LYTE's support and the opportunities they provided, I truly don't think I'd be where I am today.

TESTIMONIALS

NAIYA P.

CHARTER SCHOOL OF WILMINGTON, 2023
UNIVERSITY OF DELAWARE, 2027

LYTE helped me attend college on a full-ride scholarship, something I never thought would be possible. I am now a junior at the University of Delaware with honors studying Medical Diagnostics on the Pre-PA track. LYTE helped me get here, but even more than that, they helped me believe I belong here.

They showed me that with hard work, perseverance, and the right support system, I could overcome any challenge. My journey has not been easy. I come from a first-generation, low-income family, and my parents have always worked long hours to keep our family going. Because of that, I grew up without much guidance on how to navigate school or prepare for college. LYTE filled that gap for me. I am currently planning out my graduate school applications, and LYTE is still there for me, providing guidance and support just like they did in high school. LYTE gives me a community and the resources I need to build a future that once felt impossible.

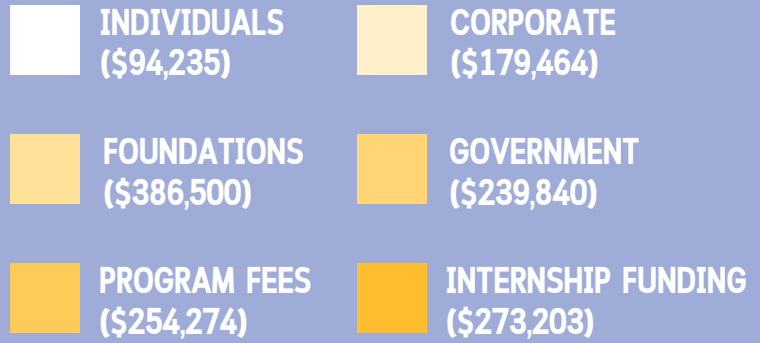
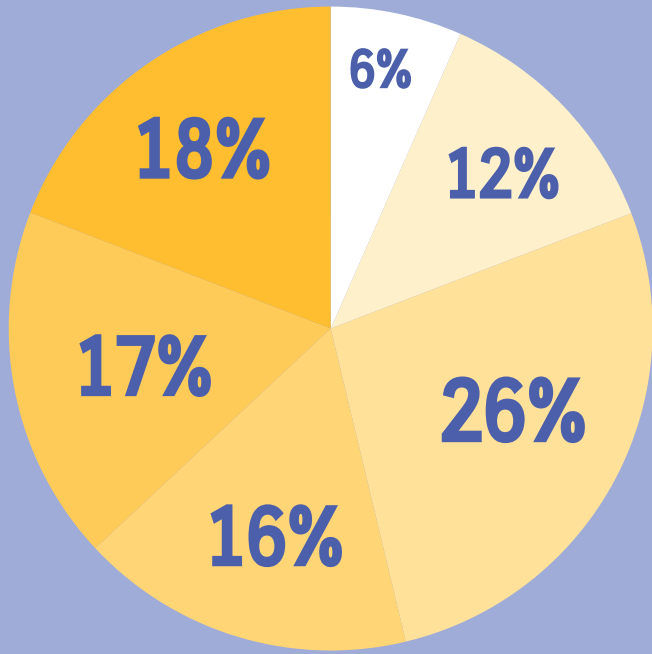


SHANEA H.

CHARTER SCHOOL OF WILMINGTON, 2019
UNIVERSITY OF DELAWARE, 2023

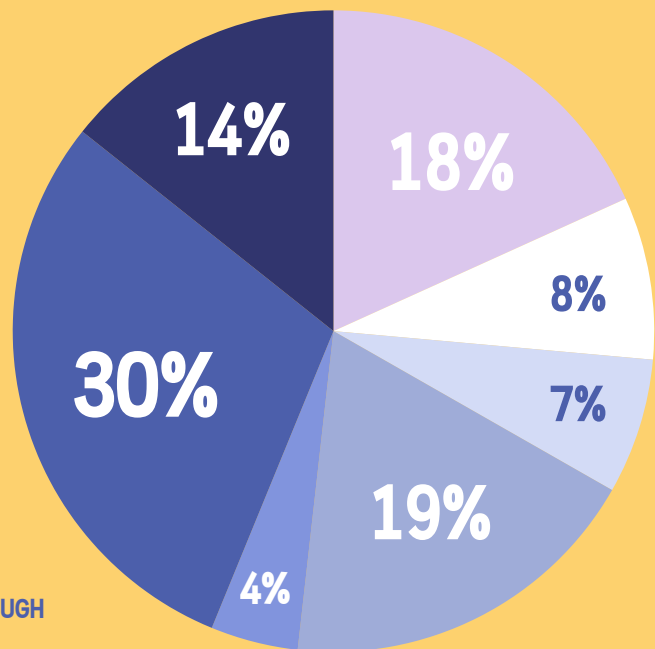
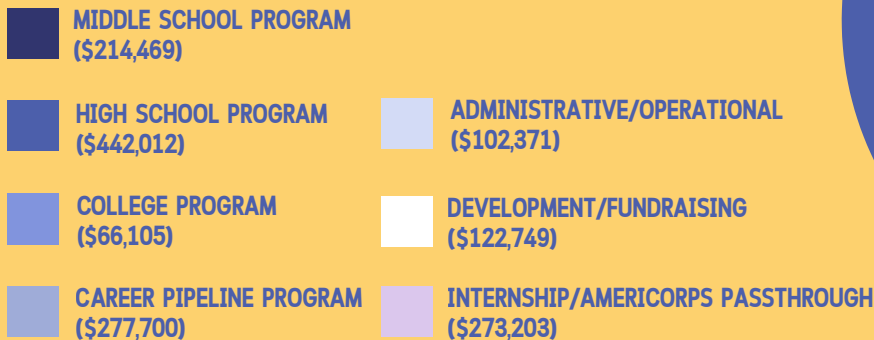
As a child of immigrant parents from Jamaica, they left everything behind and moved to the United States seeking better opportunities for their children, only to find unfamiliar faces and few resources for immigrants—that's where LYTE came in. Through LYTE's summer camps, tutoring, and high school support, I graduated with confidence, direction, and a sense of belonging. Today, I graduated from the University of Delaware as a trilingual triple major in Psychology, Spanish Studies, and Latin American and Iberian Studies. In college, I perfected my Spanish, learned Brazilian Portuguese, and conducted independent research on Brazil's educational system, leading me to study abroad and carry out a pilot study. Today, I am doing a research internship with NASA, exploring how language of instruction influences students' ability to develop STEM aptitude in bilingual classrooms using data science and Python to uncover patterns that could make education more equitable. I also teach LYTE's after-school and summer classes for middle schoolers and love giving back to the program that changed my life. LYTE helped me see that I belong in those spaces and have every right to walk through those doors with confidence, and I'll always be grateful.

FINANCIALS



REVENUE:
\$1,427,516

EXPENSES:
\$1,498,610



A YEAR OF GROWTH

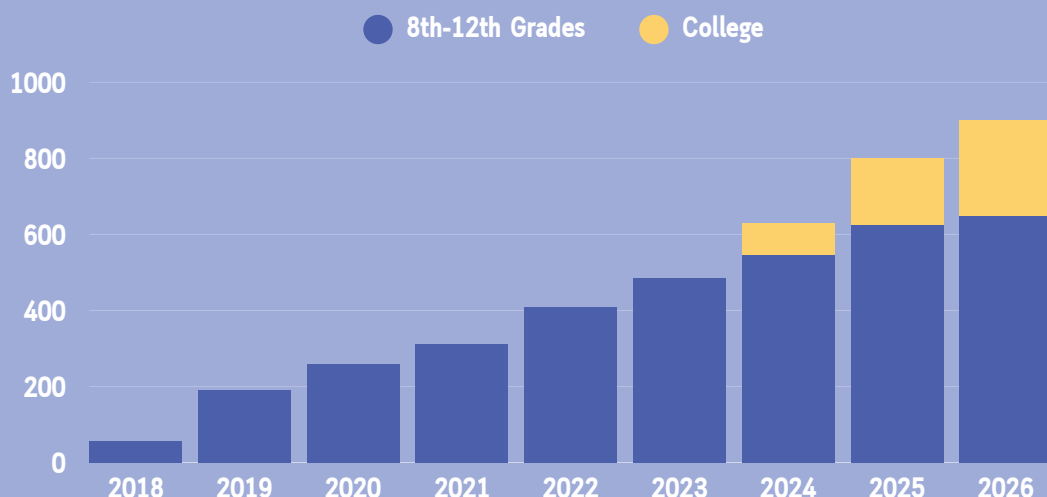
DONATE



What started over 10 years ago as a small program for only 10 ambitious middle school students has grown into a life-changing support system for 800+ students in middle school through college.

AND WE'RE NOT STOPPING THERE.

ACTIVE LYTE SCHOLARS



CONTACT



To support LYTE or share funding opportunities, please contact Marisa Ray at marisa.ray@lytescholars.org

BUT GROWTH REQUIRES FUNDING.

LYTE's impact is growing, but so are our financial needs. With more students eager to join and more schools seeking our help, we need resources to keep expanding.

YOUR SUPPORT MAKES THIS POSSIBLE.

Whether you'd like to donate directly, explore corporate or foundation funding opportunities, or connect us with potential funders, we'd love to hear from you.

THANK YOU!

At LYTE, our work empowering ambitious, underserved students is only possible because of you — our donors, sponsors, partners, funders, volunteers, and supporters. Your generosity drives our programs, giving our students life-changing opportunities that they wouldn't otherwise have access to.

As supporters of LYTE, you are the heart of our organization, and we can't express enough how grateful we are for your support. Thank you for believing in our mission and making 2025 LYTE's most successful year yet!

SPONSOR A LYTE SCHOLAR!

At LYTE, our services are completely free for students and families. LYTE Sponsors give an annual donation of \$2,500 or more, equivalent to the cost of sending one student through a year of LYTE programming. LYTE Sponsors are matched with a LYTE Scholar and receive several personalized letters from their student throughout the year.



SCAN HERE

YOUR SPONSORSHIP

\$2,500/year for up to 5 years

Value of a
Great High
School
Education

\$12,500
Investment

College

Financial Packages

Cornell University
\$72k/year

Swarthmore College
\$62k/year

Bryn Mawr College
\$60k

University of
Delaware
GSB Scholarship
\$28k/year

All LYTE Scholars
receive significant
financial aid

Adulthood

Future
community
contributors

Healthier and
more stable lives

Children more
likely to pursue
higher education

Delaware's next
generation of
leaders

LYTE SPONSORS

Andrew & Mary Bostick

Christine Livadas

Clint Walker

Emily Bonfiglio

James Nieuwland & Laura Iwanyk

John & Carol Mongan

Kate & Bob Pincus

Lauren Krisko

Laurisa Schutt

Lisa & Marty Lessner

Lynne & Fred Kielhorn

Paul & Monica Loughman

Paul & Rachel Gaskell

Peyton Carper

Pilar Kraman

Rachel & Todd Harad

Rashid Abdul

Rod & Gina Ward

Rossana Arteaga-Lopenza & Cliff Gardner

Samuel Blumberg & Elizabeth Hembree

Shiv Venkatesetty & Ritu Arya

Stephen & Joyce Lamb

Steven & Erin Harper-Ray

Tam & Darin DeFer

Todd Veale & Andrea Rocanelli

FUNDERS



AmeriCorps

WELFARE FOUNDATION, INC.



*The Laffey-McHugh
Foundation*



DCF Delaware
Community
Foundation™
Engaging Communities, Empowering Giving™

THE
CHICHESTER DUPONT
FOUNDATION



Middle Run Foundation

GLENN W. BAILEY
FOUNDATION



DISCOVER®



Rock Harbor Foundation

The Seabury Foundation
Founded by Charles Ward and Louise Lovett Seabury - 1947

WSFS | CARES
Foundation

**CRESTLEA
FOUNDATION**

M&T Bank

NORDSTROM

Wawa®

**MID-DEL
FOUNDATION**

S&T Bank

exelonSM



MIDDLE SCHOOL PROJECT SHOWCASE, 2025



GET INVOLVED!

SIGN UP FOR OUR
EMAIL LIST



DONATE
SUPPORT OUR MISSION



SPONSOR
AN INDIVIDUAL SCHOLAR



VOLUNTEER
YOUR TIME FOR LYTE STUDENTS



LYTE CONNECT
MENTOR A LYTE SCHOLAR



**CAREER
COLLABORATION**
HOST LEARNING OPPORTUNITIES



**CORPORATE &
FOUNDATION
GIVING**



**HOST AN
INTERN**



**CONNECT
WITH US**



(302) 786-5983



LYTEINFO@LYTESCHOLARS.ORG



@LYTESCHOLARS



FACEBOOK.COM/LYTESCHOLARS

